

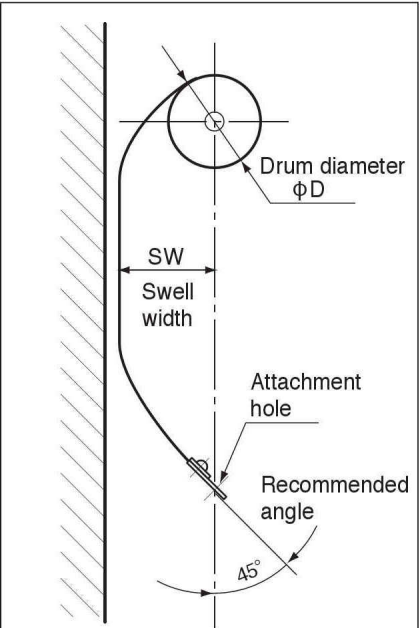
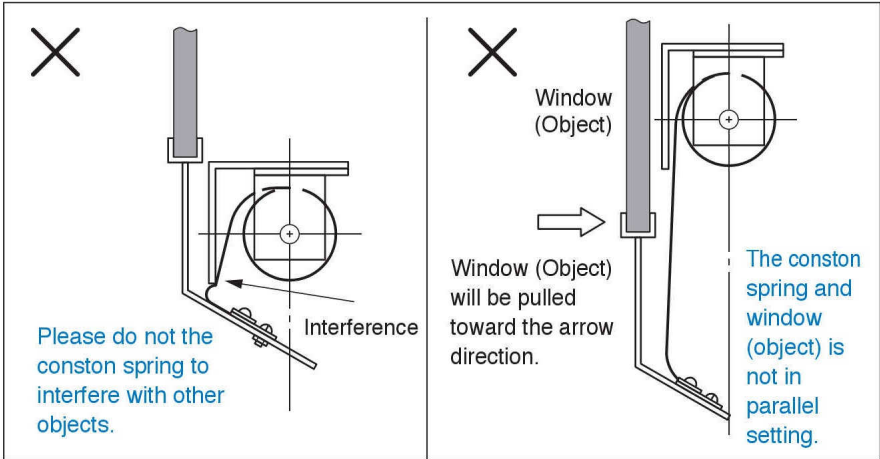
# Cautioning points when assembly

Conston spring can be used in varieties of applications, and the assembly methods may vary through. Here, we describe basic cautious points when assembly by using SB type series for lifting up window as an explanation example.

In this drawing, bracket is attached to conston spring, but please note that in normal type of conston spring and CS type, there are no bracket attached. Please combine our optional items (SBR) or prepare attachment components by yourself for setting the conston spring.

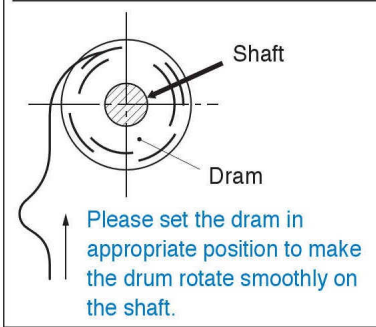
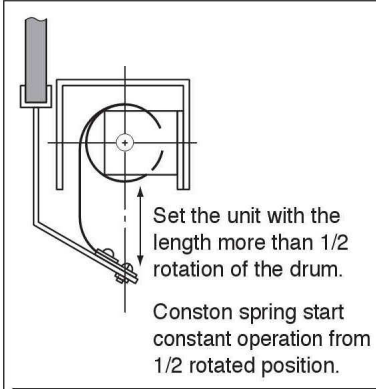
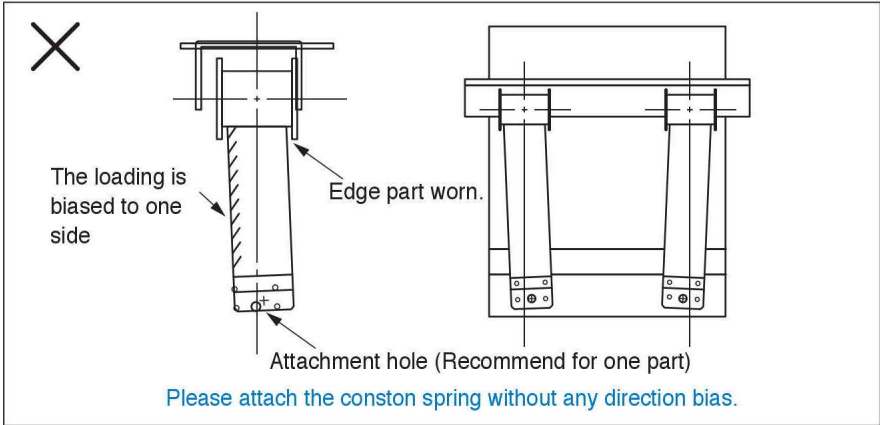
## 《GOOD and NG way of attachment》

<p>For vertical operation</p> <p>Can be also used with the end plate or bracket part fixed.</p>	<p>For horizontal operation</p>	<p>End plate</p> <p>Conston spring</p> <p>Shaft</p> <p>Bracket (Option)</p> <p>Fig. 1</p> <p>Fig. 2</p> <p>Please set with the Fig. 1. pulling position for the conston spring unit.</p> <p>Do not set with the Fig. 2 position as the conston spring may interfere with the bracket.</p> <p>The life cycle may decrease when any foreign object get attached.</p>
<p>Attach from this side.</p> <p>Window (Object)</p> <p>Screw right below the shaft.</p>	<p>Attach from this side.</p>	
<p>Opposite pulling direction</p> <p>Extreme bending</p>	<p>Opposite pulling direction</p> <p>Extreme bending</p>	<p>Attachment angle error</p>



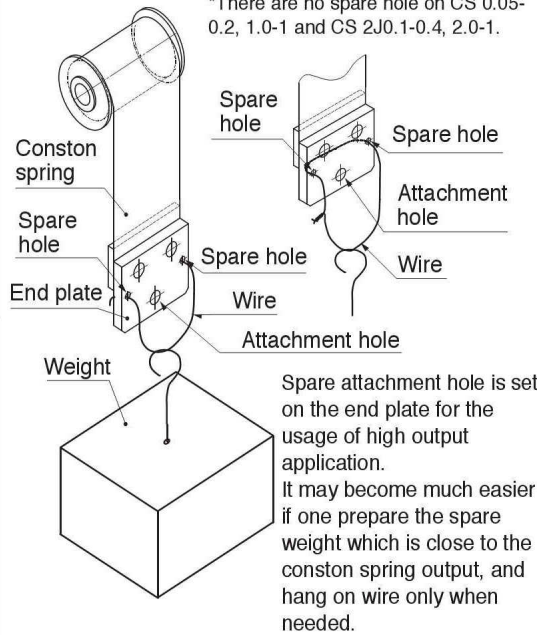
Conston have a tendency of getting swelled when pulled out, so please set the conston without making it to interfere with other parts.

For the attaching angle for the opposite component, we recommend 45 degrees.

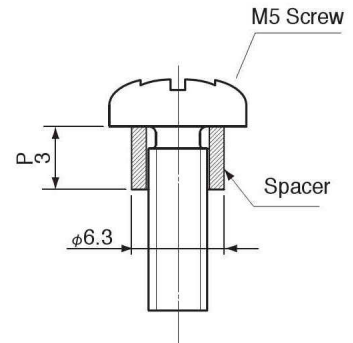


**Usage methods for the spare attachment hole**

\*There are no spare hole on CS 0.05-0.2, 1.0-1 and CS 2J0.1-0.4, 2.0-1.



**Recommendation Use spacer for the screw**



When attaching the attachment hole on the end plate (center hole) to the attachment object, it will be much easier to use spacer. The space on P side will absorb twist occurred by slightly twisted attachment.

The recommended spacer is SMK5-3 (MISMI).

**DANGER** Please do not pull the conston spring exceeding the specified stroke. The spring may come off from the drum and lead to injury. The standard stroke amount is describe on the end of conston spring.